

Shops Task - Walkden

1. Look at the photographs of Manchester Road and Bolton Road in Walkden in the 1950s and 1960s. Compare these pictures with these roads today, either using your own knowledge of the area or using 'street views' from the internet. What has changed and what has stayed the same? In your answer, write about the type of shops as well as changes to the general look of the street.
2. What can we learn from these photographs about life in the 1950s and 1960s? (Clues: tobacco advertisements, several shops offering a clothes cleaning service)
3. Why do you think these streets have changed since the 1950s and 1960s?
4. Show some of these pictures to people you know who would have lived in Walkden in the 1960s. What memories do they have of these places?



Bolton Road in the 1950s



Bolton Road in the 1960s



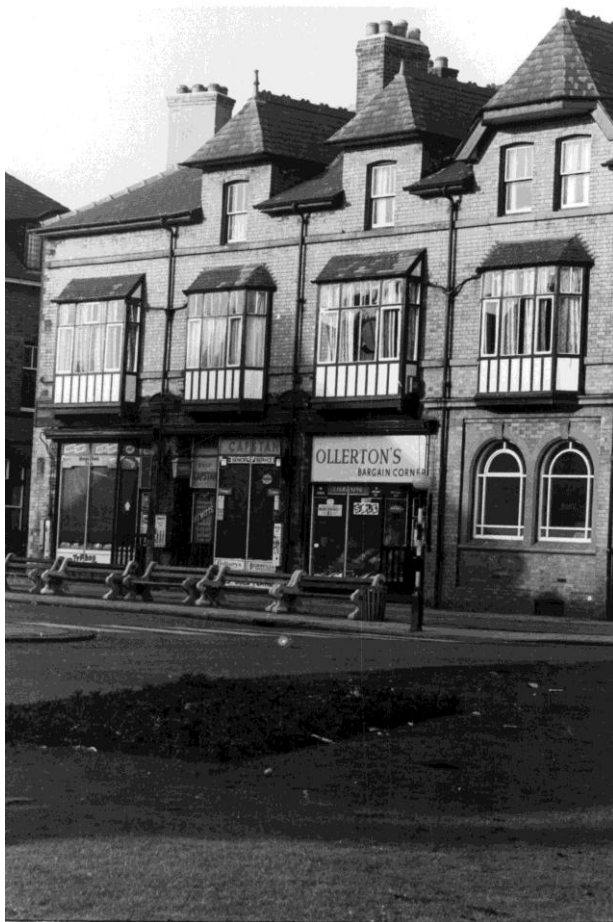
Bolton Road in about 1960



Bolton Road in about 1965



Manchester Road in about 1965



Manchester Road in 1966